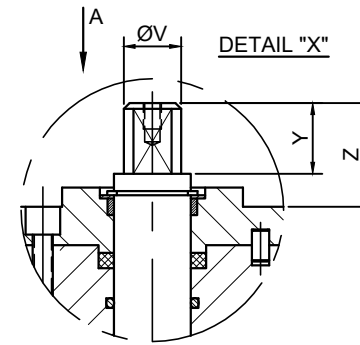
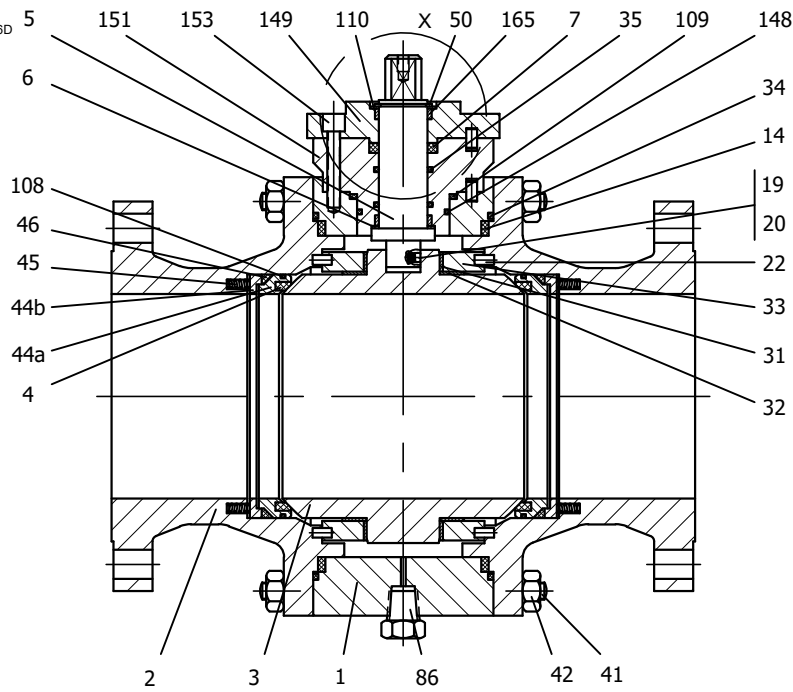
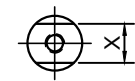


DESIGN STANDARDS:

- DESIGN ASME B16.34/API 6D
- FLANGES ASME B16.5
- FACE TO FACE ASME B16.10
- TOP FLANGE ISO 5211



VIEW FOR "A"



AIR FAILURE POSITION: CLOSE

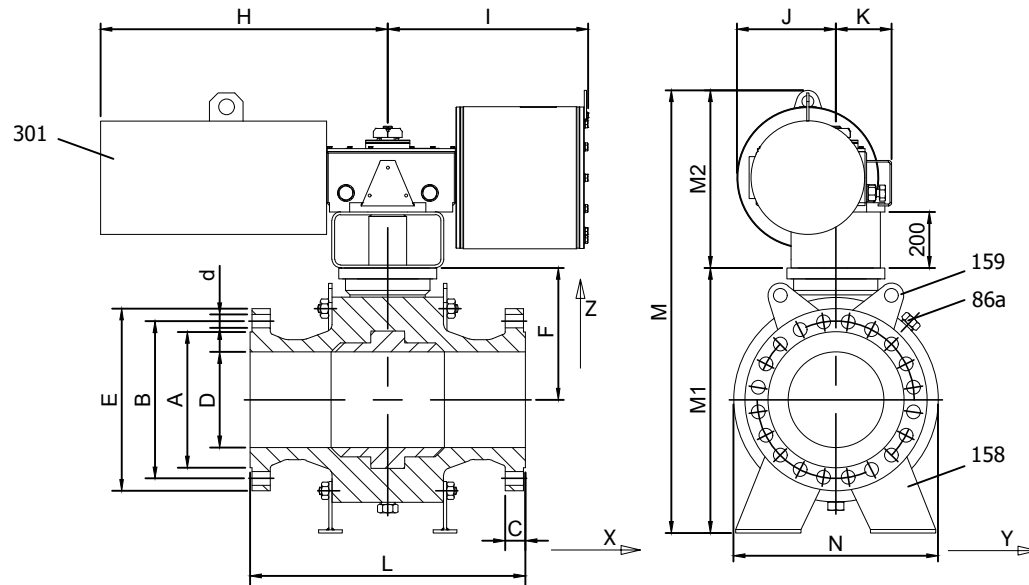


FIG.GKS 15 SGSGV			
POS.	DESCRIPTION	QTY.	MATERIALS
165	Stem bearing	2	PTFE+FG
159	Lug	4	ST-37
158	Support	4	ST-37
153	ISO cover bolt	-	SS(316)
151	Body cover 1	1	A350 LF2
149	ISO cover	1	A350 LF2
148	O ring cover	1	FKM
110	O subsection ring	1	AISI 316 Nitrided
109	Cover seal	1	GRAPHITE
108	O ring seat	2	FKM
86a	Vent plug	1	A350 LF2
86	Drain plug	1	A350 LF2
50	Subjection ring	1	AISI 420
46	Seat seal	2	GRAPHITE
45	Spring seat	-	INCONEL X750
44b	Ring seat 2	2	AISI 316
44a	Ring seat 1	2	AISI 316
42	Nut	-	A194 7M
41	Stud	-	A320 L7M
35	O ring stem	2	FKM
34	Body seal 2	2	GRAPHITE
33	Support bearing	2	S275JR+ENP
32	Bearing disk	2	PTFE+FG
31	Bearing	2	MU
22	Pin	4+4	AISI 316
20	Antistatic ball	1	INCONEL 625
19	Spring	1	INCONEL X750
14	Body seal 1	2	PTFE+CG
7	Stem packing	1	GRAPHITE
6	Stem seal	1	PTFE+CG
5	Stem	1	A182 F51
4	Seat	2	PTFE+CG
3	Ball	1	A350 LF2+ENP
2	Body 2	2	A350 LF2
1	Body 1	1	A350 LF2

- For Reference
- For Approval

Revision Nr.	By
1	-
2	-
3	-

Drawn by	R.R.	13.02.24
Checked by	J.H.	13.02.24

Drawing Nr.	0-26-250150SGSGV
	47037

FULL TRUNNION PEKOS BALL VALVE
ANSI 24" CLASS 150 RF



NPS	D	L	E	A	B	C	F	M1	M	N	V	X	Y	Z	Holes Nr.	d	ISO 5211	Weight (Kg)
24"	589	1067	815	692.2	749.3	48	618.5	1234	1869.5	1060	98	75	100	106	20	35	F30	4225

M2	H	I	J	K
635.5	1027.5	1717.5	354	200